

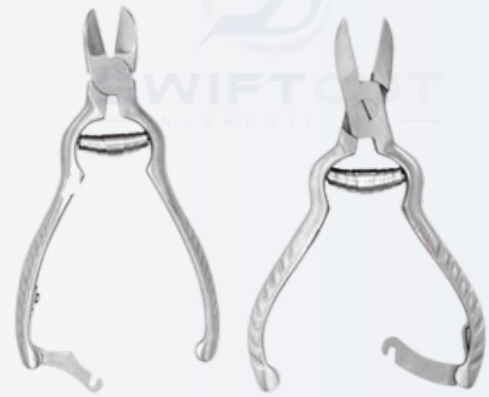
NAIL INSTRUMENTS

Nail instruments are designed for the insertion, adjustment, and removal of intramedullary nails used in fracture fixation. Our range includes reamers, nail drivers, extractors, and alignment tools, all engineered for precision and strength. Crafted from durable surgical-grade materials, these instruments ensure accurate handling, stability, and ease of use throughout nailing procedures.



NAIL NIPPERS

TURNBULL NAIL NIPPERS



CODE #	DESCRIPTION
188030	4-1/2" (11.5 cm)
188032	5-5/8" (14.5 cm)

NAIL NIPPERS

Stainless steel. Angled, concave, 5-1/2" (14 cm).



CODE #	DESCRIPTION
SC69440	Sharp end
SC69441	Blunt end

MYCOTIC NAIL NIPPERS

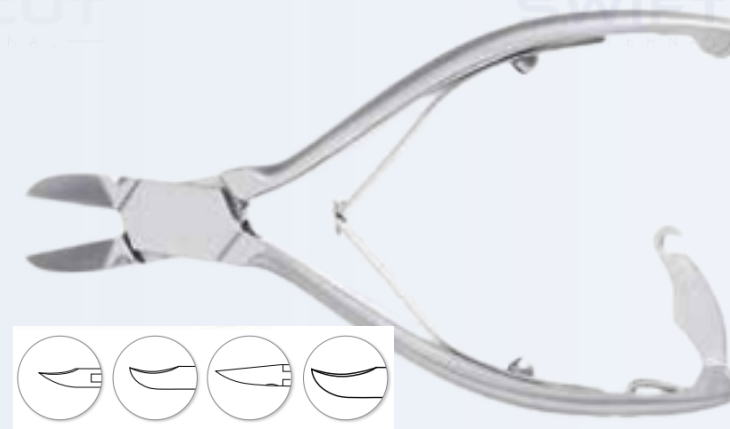
Double action helps prevent hand fatigue. Ideal for Mycotic and Onychiauxis nails. Stainless, double action, barrel spring, 6" (15.5 cm).



CODE #	DESCRIPTION
SC69445	Straight
SC69446	Concave

NAIL NIPPERS

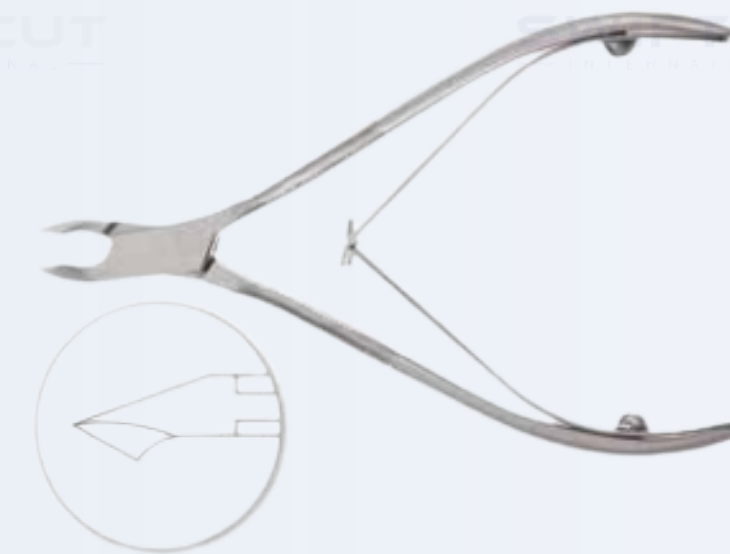
Stainless steel, 5-1/2" (14 cm).



CODE #	DESCRIPTION
SC69418	Narrow, concave
SC69430	Heavy, concave
SC69432	Heavy, straight
SC69438	Heavy, concave, super size

TISCUE NIPPERS

Stainless steel.

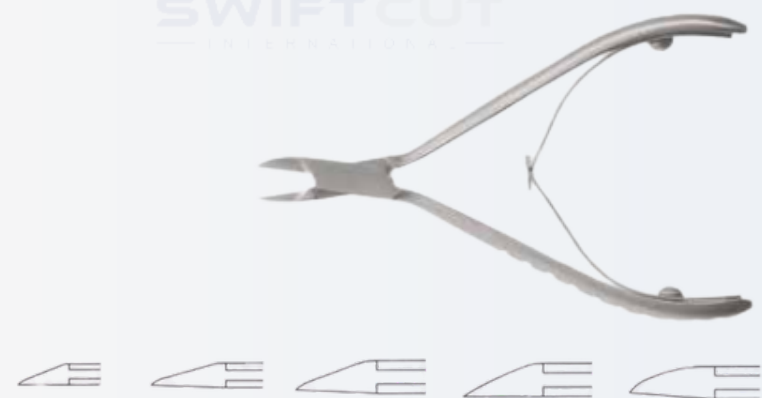


CODE #	DESCRIPTION
SC69438	6 mm, 4" (10 cm)
SC69291	9 mm, 4" (10 cm)
SC69292	11 mm, 4-1/2" (11.5 cm)
SC69294	14 mm, 5" (12.5 cm)

NAIL SPLITTERS

NAIL SPLITTERS

With grooved handles to improve grip.



CODE #	DESCRIPTION
SC69320	4" (10 cm)
SC69322	4-1/2" (11.5 cm)
SC69326	Heavy jaw, 5" (12.5 cm)
SC69327	Narrow jaw, 5" (12.5 cm)
SC69340	6" (15 cm)

NAIL SPLITTERS

Our splitters have the true feel of superb craftsmanship. The cutting edge is expertly ground and specially heat treated. For a sure grip, our stainless splitters come with grooved handles. Stainless steel.



CODE #	DESCRIPTION
SC69341	Tapered, 4" (10 cm)
SC69342	Tapered, 4-1/2" (11.5 cm)
SC69343	Tapered, 5" (12.5 cm)
SC69344	Tapered, 6" (15 cm)
SC69448	Delicate, 4-1/2" (11.5 cm)

NAIL SPLITTERS



CODE #	DESCRIPTION
SC69557	Small, straight blade, single-ended, 5" (12.5 cm)

SHORT JSC NAIL SPLITTERS

Short jaw design provides increased leverage for easier cutting of thick nails — less strain on hand and splitter. Stainless steel.

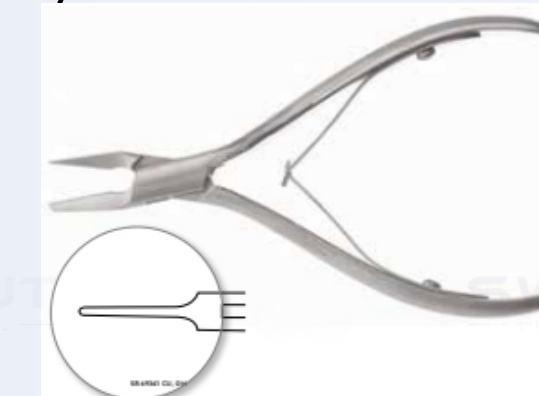


CODE #	DESCRIPTION
SC69930	Straight, 5" (12.5 cm)
SC69932	Straight, 6" (15 cm)

NAIL FORCEPS

INGROWN NAIL FORCEPS

Very delicate anvil design slides easily under nails.



CODE #	DESCRIPTION
SC69348	Anvil pattern, narrow blade, 5" (12.5 cm)

NAIL SCISCORS

INGROWN NAIL INSTRUMENT #81



CODE #	DESCRIPTION
SC69595	Single-ended, 5" (12.5 cm)

INGROWN NAIL SPLITTING SCISCORS



CODE #	DESCRIPTION
SC69805	One serrated blade, 6" (15 cm)

PLATYPUS NAIL REMOVING FORCEPS



CODE #	DESCRIPTION
SC69792	3 mm, narrow, 5-1/2" (14 cm)
SC69793	6 mm, broad, 5-1/2" (14 cm)

NAIL SCISCORS

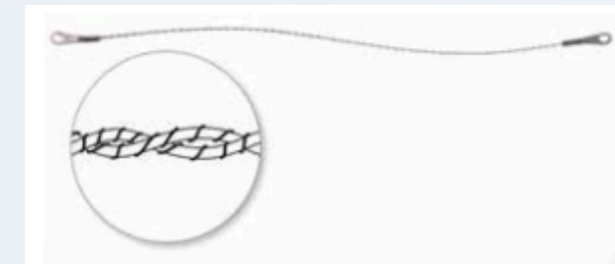


CODE #	DESCRIPTION
SC69106	Curved, 4" (10.5 cm)

BONE SSCS AND KNIVES

GIGLI SSC BLADES

For cutting hard bone in difficult areas or situations.



CODE #	DESCRIPTION
SC46612	9" (23 cm)
SC46613	12" (30.5 cm)
SC46609	16" (40.5 cm)
SC46614	20" (51 cm)
SC46615	30" (76 cm)
SC46616	Loop-style, 3-1/2" (9 cm) wide, one pair
SC46610	Loop-style with snap lock, 3-3/8" (8.5 cm) wide, one pair
SC46617	T-style, 2-1/2" wide, one pair

CHARRIERE BONE SSCS

Stainless steel frame, chrome blades.



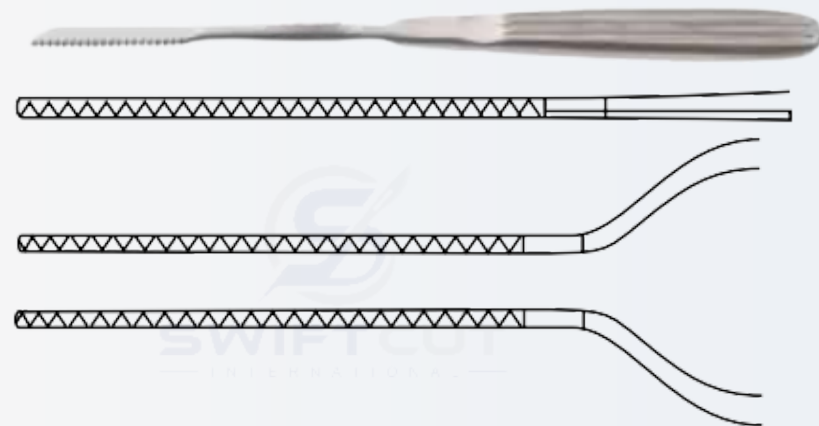
CODE #	DESCRIPTION
SC46645	10-1/2" (26.5 cm) complete
SC46646	Chrome blade only for SC46645
SC46683	14" (35.5 cm) complete
SC46684	12 mm chrome blade only for SC46683
SC46685	14 mm chrome blade only for SC46683

RANEY GIGLI SSC GUIDE

CODE #	DESCRIPTION
SC46620	Curved tip, straight shaft

JOSEPH BONE SSCS

7" (19 cm).



CODE #	DESCRIPTION
SC58096	Straight
SC58097	Bayonet left
SC58098	Bayonet right

LANGENBECK METACARPAL SSC



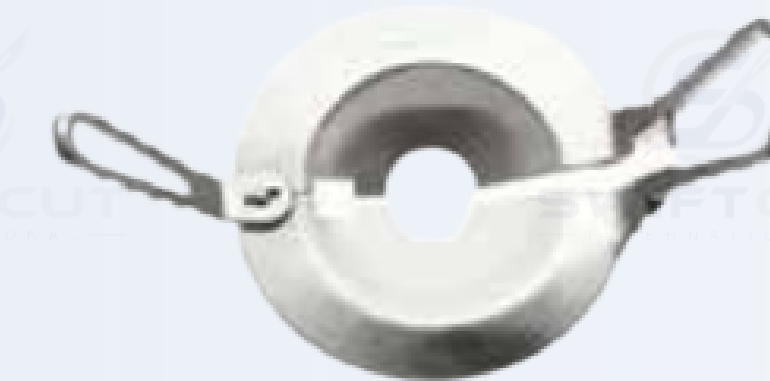
CODE #	DESCRIPTION
SC46601	9" (23 cm)

SATTERLEE BONE SSC



CODE #	DESCRIPTION
SC46643	3 Complete with ring handle, 11-1/2" (29 cm)

PERCY AMPUTATION SHIELD



CODE #	DESCRIPTION
SC46602	12" (30.5 cm)

LISTON AMPUTATING KNIVES



CODE #	DESCRIPTION
SC46598	6-3/4" (17 cm) blade
SC46600	8" (20.5 cm) blade

PEDIATRIC CAST BREAKER



CODE #	DESCRIPTION
SC46188	7" (18 cm)

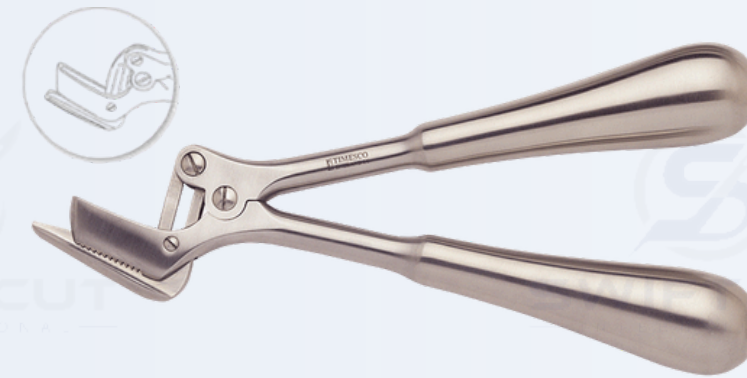
SATTERLEE SSC BLADES ONLY



CODE #	DESCRIPTION
SC46642	Blade only for SC46643, 8-3/8" (21.5 cm)
SC46644	Blade only for SC46643

STILLE PLASTER SHEARS

For cast removal.



CODE #	DESCRIPTION
SC46156	15" (38 cm)

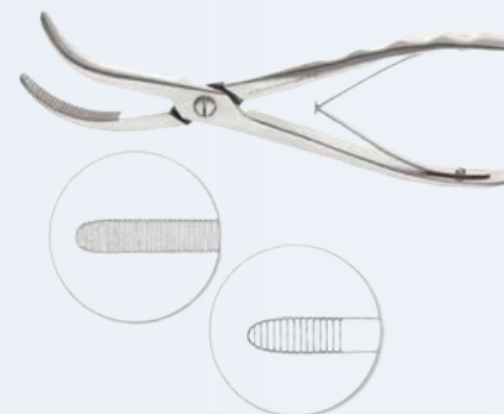
BRUNS SHEARS

For heavier plaster



CODE #	DESCRIPTION
SC46090	One blade serrated, 9-3/8" (24 cm)

WOLFF (BOEHLER) CAST BREAKERS



CODE #	DESCRIPTION
SC46186	Small, 7" (18 cm)
SC46184	9-7/8" (25 cm)

HENNIG PLASTER SPREADER

To relieve cast pressure or for cast removal. One-handed operation.



CODE #	DESCRIPTION
SC46138	10-5/8" (27 cm)

WALTON CAST SPREADER

To relieve cast pressure or for cast removal. One-handed operation.



CODE #	DESCRIPTION
SC46133	8-5/8" (22 cm)

REINER PLASTER KNIFE

Stainless handle



CODE #	DESCRIPTION
SC46058	7" (18 cm)

ENGEL PLASTER SSC

Chrome handle and stainless blade.



CODE #	DESCRIPTION
SC46056	6" (15 cm)

CAST SPREADER

To relieve cast pressure or for cast removal. One-handed operation.



CODE #	DESCRIPTION
SC46134	8-7/8" (22.5 cm)